



BE HOME  
FROM ANYWHERE  
ANYTIME

# “ IMAGINE A HOME THAT LISTEN TO YOU

A cutting edge platform to automate your home & office

A single system for all devices and accessories which can be accessed over the internet via your smartphone, Alexa and Google Home

A wide range of smart devices that can be installed in new as well as existing buildings without any rewiring





# “ LIGHT UP YOUR MOOD

## LIGHTING **AUTOMATION**

Remotely manage or schedule lights and create automated changes in the interior and exterior lighting levels to set the right ambience according to the occasion



# “ PRIVACY AT YOUR FINGERTIPS

## CURTAIN & SHADES **CONTROL**

Operate your curtains and window blinds individually or together from anywhere using a mobile app or voice commands



“  
OPEN NEW  
POSSIBILITIES

### AUTOMATED GATE

Use your mobile phone to remotely operate the gate.



“  
MAKE IT A  
SAFE &  
SMART HOME

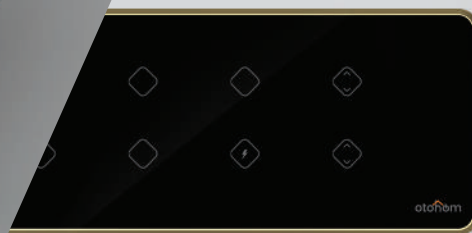
### DIGITAL DOOR LOCK

Open or close the door to your home remotely with your mobile phone.



# OUR PRODUCTS

## GRANDE SERIES



- ◆ Premium Glass Touch Panel
- ◆ Machine cut Aluminum Finish
- ◆ Power measurement



Wi-Fi enabled



Alexa &  
Google Home



Otohom  
Android & iOS app

# OUR PRODUCTS

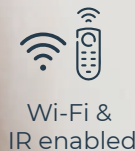
## ELEGANTE SERIES



- Touch Sensing
- App Control
- AI Voice Control
- Timing Countdown



- Scene Mode
- Smart Connection
- Automation Achieve
- Custom Pattern Text



Wi-Fi &  
IR enabled



Alexa &  
Google Home

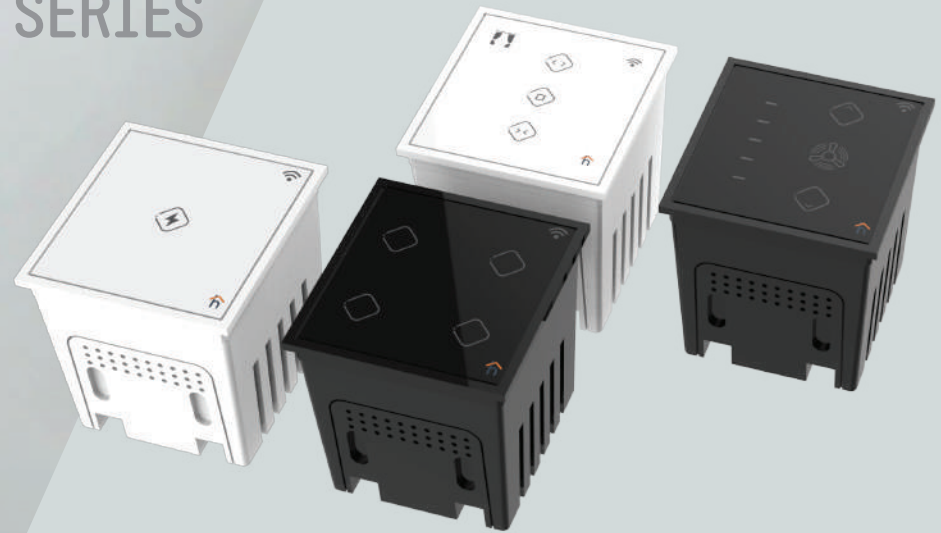




# OUR PRODUCTS



## ECO SERIES



Modular design

Glass touch panel

Fits standard box and plate sizes

Multiple combinations



Wi-Fi enabled



Alexa & Google Home



Otohom Android & iOS app

*\*\*Variety of switch combinations available. Please visit [otohom.com](http://otohom.com) for more details*

[www.otohom.com](http://www.otohom.com) | +91 915 005 5004 | +91 790 230 6244

# MULTI-BRAND INTEGRATION

## MOTION **SENSOR**



Detects movement of objects and take action

## DOOR **SENSOR**



Engage security when you are out and our system will alert you if someone tries to break in

## GAS LEAK **SENSOR**



Be safe by having our automatic alert system in case there is gas leakage in your home

\*\* We undertake projects to integrate smart devices and sensors from other brands with Otohom platform



# MULTI-BRAND INTEGRATION



## WATER LEAK / WATER LEVEL **SENSOR**

Concerned about water leakage spoiling your valuable interiors?

**We have a solution for you .**  
Automatically turn on or off the motor based on water level in your overhead tank



## VIDEO DOOR**PHONE**

Now see your visitors on the mobile application and attend the main door even when you are away



## THERMOSTAT**CONTROL**

Maintain ideal temperature in your home without being physically present

\*\* We undertake projects to integrate smart devices and sensors from other brands with Otohom platform

# MULTI-BRAND INTEGRATION

## OCCUPANCY SENSOR

Save energy by turning off devices  
when nobody is around

## SMART IRRIGATION

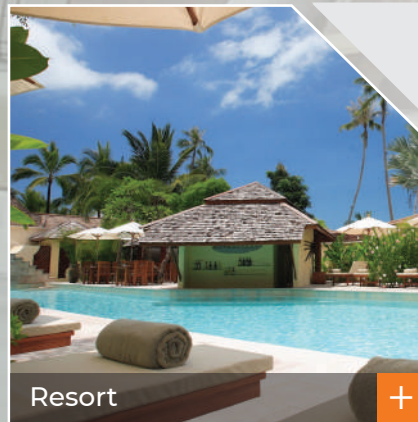
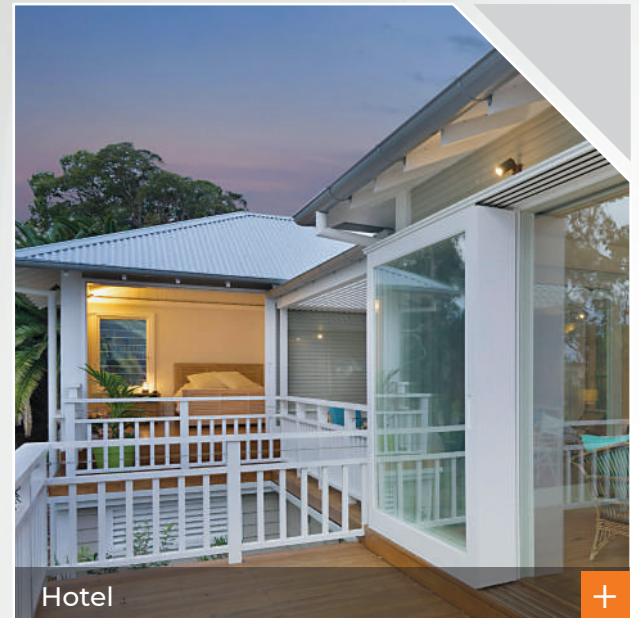
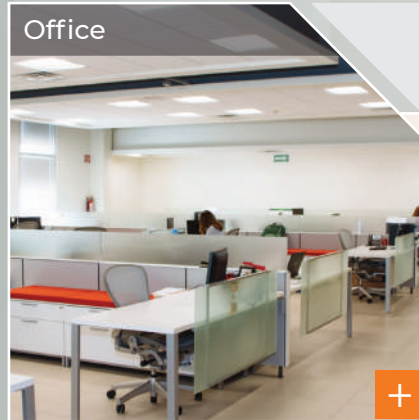
Watering your favorite garden is no more a  
routine task. Our automated smart irrigation  
solution works based on soil and weather  
conditions

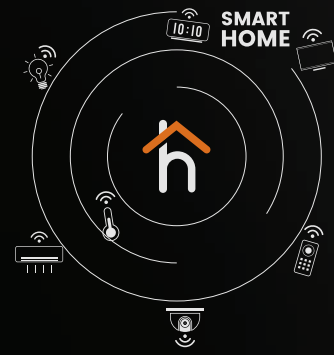
\*\* We undertake projects to integrate smart devices and sensors  
from other brands with Otohom platform





“  
PROVIDE  
SOLUTIONS TO





We are passionate about bringing a smart technology solutions to your residential and commercial lifestyles. We specialize in home and building automation systems through smart technology solutions that make your space connected, intuitive and safe.

By combining our unrivaled design, installation expertise, customer-focused approach and high-quality product offerings and services. We make it easy for you to experience all the benefits of custom technology solutions in your home or business.

**Otohom Automations Pvt. Ltd.** USA | IND

C-10, 1st C Main Road, MCHS Colony, SECTOR-6, HSR Layout, Block-6. Bangalore- 560 102.  
Tech. Partner - Lanware Solutions LLP, Trans Asia Cyber Park, Tower 2, 9F, Infopark Sez, Phase II, Kochi, Kerala - 682303.

WEB : [www.otohom.com](http://www.otohom.com) | EMAIL : [sales@otohom.com](mailto:sales@otohom.com) | ENQUIRY : +91 915 005 5004, +91 790 230 6244  
Customer Care : +91 859 060 2881. For Trade Enquiry : +91 984 627 7244

Our channel partner

